



SNF

RESPONSIBLE CHEMISTRY

**Performance
Meets Beauty**

PERSONAL CARE

INDEX



5

SKIN CARE




14

HAIR CARE



20

BATH & SHOWER



SNF, headquartered in Andrézieux, France, is a leading global producer of water-soluble polymers with manufacturing sites in Andrézieux, France; Savannah, USA; and Taixing, China. For 2020, SNF had annual revenues of approximately € 3.0 bn.

Over the last 40 years, SNF has developed expertise in polymer chemistries designed for specific markets. In Personal Care, SNF offers a wide range of polymers as rheology modifiers, thickeners, and film formers to cover the needs of this market.

SNF makes the best use of the newest polymerization technologies for synthesizing and manufacturing anionic, cationic, amphoteric and nonionic polymers. As an added advantage, SNF is back-integrated in the most strategic monomers to best serve our customers regarding product costs, quality, and supply.

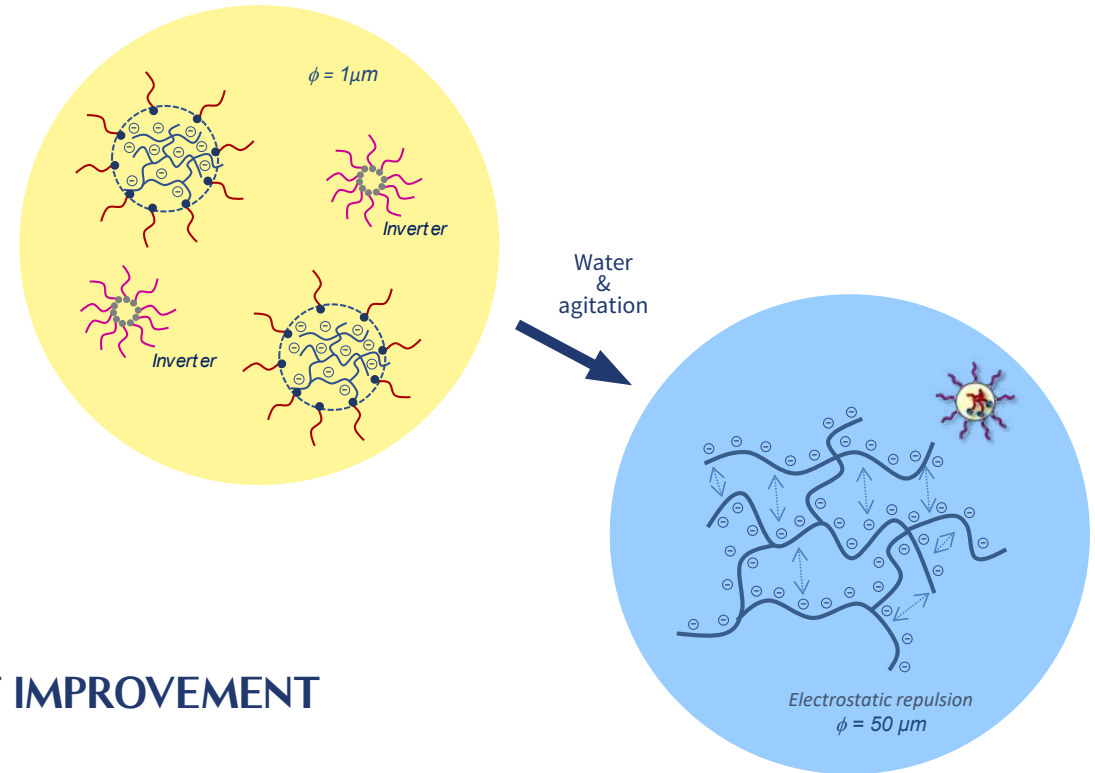
This know-how in monomers, polymer design, and industrial process applications allows SNF to react and innovate according to changing trends and customer needs within the cosmetic market.

RHEOLOGY MODIFIERS

LIQUID DISPERSION POLYMERS

LDPs (Liquid Dispersion Polymers) are water in oil emulsions where the water droplets act as microreactors in which the polymer is synthesized.

An oil-in-water emulsifier (surfactant) allows the Liquid Dispersion to invert once in water phase. Water is absorbed by the polymer which swells building viscosity up.



SUSTAINABILITY PROCESS: CARBON FOOTPRINT IMPROVEMENT

Using **SNF cold processable inverse emulsions** help **save time and energy** to manufacture skin care formulas.



70%

MANUFACTURING TIME SAVED



96%

EQUIVALENT CO₂ EMISSIONS SAVED



SKIN CARE

ACHIEVING BEST TEXTURES WITH SNF INVERSE EMULSION POLYMERS



FLOCARE™ ET, FLOCARE™ ES, FLOCARE™ PSD and NATURSOL™ EMI are Liquid Dispersion Polymers (LDPs) produced by inverse emulsion polymerization. With this process, it is possible to achieve very high molecular weight, crosslinked polymers with optimized rheological properties. SNF offers a wide range of products from low to highly concentrated thickeners.

NATURSOL™ EMI 132 is 67% of natural origin (ISO 16128) and 100% Vegan.

SNF also offers rheology modifiers in powder form, such as FLOCARE™ PSD 30.





FLOCARE™ SK polymers are obtained by precipitation. These polymers are ready to use and provide clear and viscous cold process formulations.

FLOCARE™ SK 425 delivers transparency and high electrolyte resistance. FLOCARE™ SK 410 provides both transparency and high viscosity formulas at low concentration.

BENEFITS

- Multifunctional rheology modifiers: **thickening, stabilizing, and texturizing**
- Low to high concentrated thickeners can be added at any stage
- **Auto-emulsifier**: additional surfactants not needed for stable formulations up to 30% oil
- Suspension power
- **Ready & Easy to use**: pre-neutralized liquid or powder
- **Can be used in cold or hot processes**
- Compatible within a wide pH range
- Allows for formulations from sprays to creams
- Delivers **sensorial benefits** (freshness, hydration, softness)

LIQUID DISPERSION POLYMERS - ANIONIC

Product	INCI Name	% Active	Optimal pH Range	Applications and Uses
 NATURSOL™ EMI 132	Sodium Acrylate/Sodium Acryloyldimethyl Taurate Copolymer, C15-19 Alkane, Lauryl Glucoside	33	5 - 12	67% naturally derived. Formulation with natural index close to 100%. Light texture, fresh touch, and soft after-feel.
 FLOCARE™ ET 100	Sodium Polyacrylate, Ethylhexyl Stearate, Trideceth-6	60	6 - 11	Glossy, fast absorption, soft and non-tacky after-feel, good consistency and pick-up. Long lasting moisturization.
 FLOCARE™ ET 76	Sodium Polyacrylate, Hydrogenated Polydecene, Trideceth-6	57	6 - 11	Glossy, fast absorption, extra soft and non-tacky after-feel, good consistency and pick-up. Long lasting moisturization.
 FLOCARE™ ET 36 V	Sodium Acrylate/Sodium Acryloyldimethyl Taurate Copolymer, Hydrogenated Polydecene, Trideceth-6, Sorbitan Laurate	52	3 - 12	Soft skin after-feel. Used in anti-aging or anti-acne creams.
FLOCARE™ ES 502	Sodium Polyacrylate, Mineral Oil, Trideceth-6	50	6 - 11	Rich texture with a powder effect. High electrolyte stability. Can be used in sunscreen formulations.
FLOCARE™ ET 30	Sodium Acrylate/Sodium Acryloyldimethyl Taurate Copolymer, Mineral Oil, Trideceth-6	58	3 - 11	High electrolyte stability, glossy, light and soft skin feel with velvet effect.
FLOCARE™ ET 305	Polyacrylamide, C13-14 Isoparaffin, Laureth-7	40	3 - 10	Good electrolyte stability, soft and smooth skin feel with velvet effect.

PATENTED



Considered naturally derived (ISO 16128-2:2017)



Contains natural ingredients.

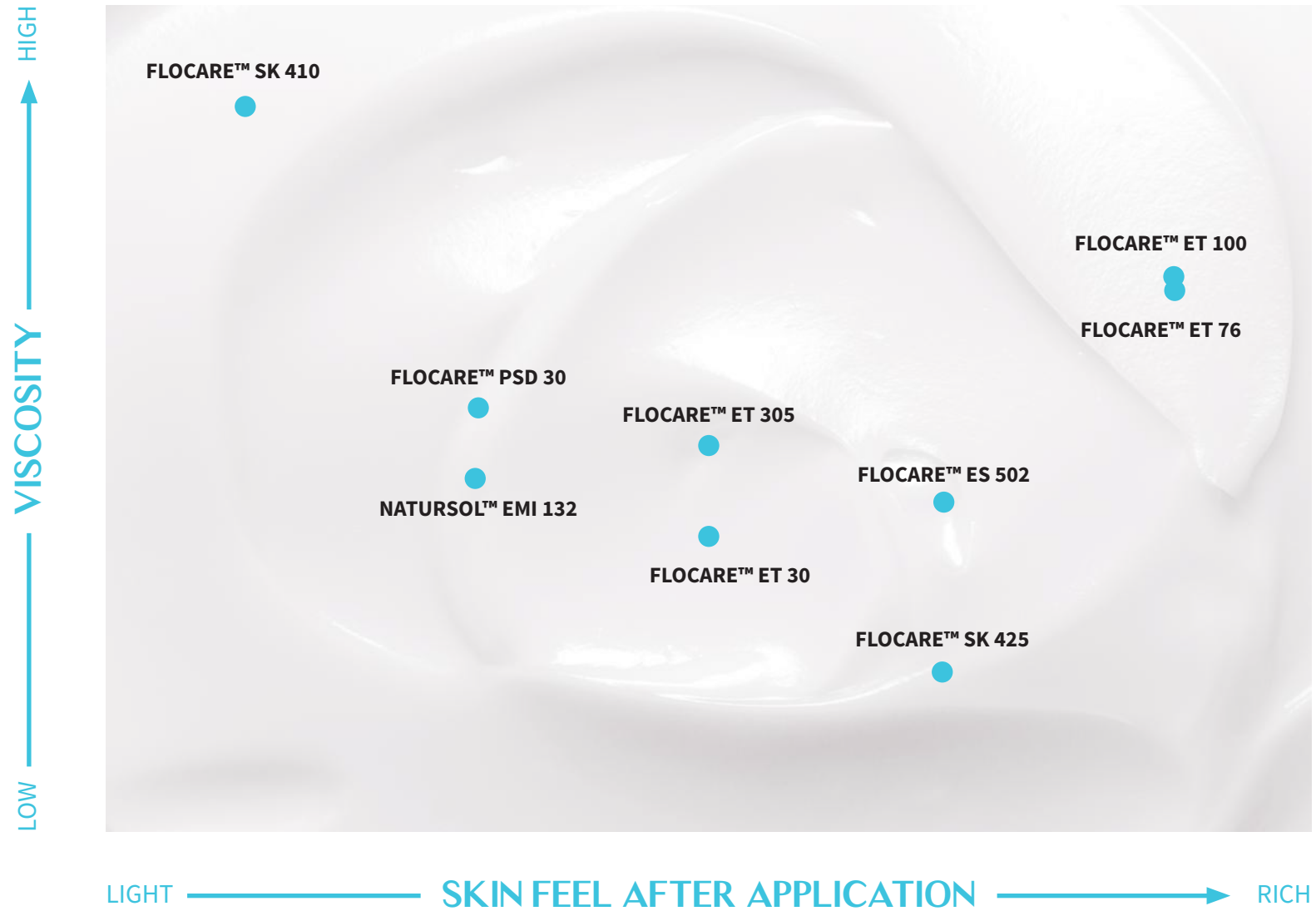
Recommended dosage for inverse emulsions in formulations is: 2 to 4%.

POWDER POLYMERS - ANIONIC

Product	INCI Name	% Active	Optimal pH Range	Applications and Uses
FLOCARE™ PSD 30	Sodium Acrylate/Sodium Acryloyldimethyl Taurate Copolymer	> 85	3 - 11	Light and melting textures. Non-tacky and non-greasy, suitable for serum and hydro-alcohol gels.
NEW FLOCARE™ SK 410	Ammonium Polyacryloyldimethyl Taurate	> 92	4 - 8	Crystal clear formulations or emulsions with high viscosity and light, non-sticky after-feel. Acts as a viscosity booster and emulsion stabilizer.
NEW FLOCARE™ SK 425	Ammonium Polyacryloyldimethyl Taurate	> 92	4 - 8	Crystal clear formulations or emulsions with medium viscosity and ultra soft after-feel. Delivers extreme resistance to electrolytes and provides foam stabilization.



SENSORY PROFILE OVERVIEW



Anti-Aging Cream

SNF - SK 002

Commercial name	INCI	Wt.%
Demineralized Water	Aqua (Water)	QSP 100
Glycerin	Glycerin	3.00
Pentiol Green+	Pentylene Glycol	2.00
Sensicare® NAT	Glycerin, Citrus Grandis Peel Extract, Capsaicin, Naringenin, Ascorbic Acid, Hesperidin, Citrus, Reticulata Peel Extract, Lactic Acid, Citric Acid	1.50
SAFIC Care E Pom O	Pyrus Malus (Apple) Seed Oil	5.00
Floramac® 10	Ethyl Macadamiate	10.00
DavosLife E3 DVL95	Tocotrienols Elaeis Guineensis (Palm) Oil	0.20
Apple Dona 28690	Parfum	0.30
FLOCARE™ ET 30	Sodium Acrylate/Sodium Acryloyldimethyl Taurate Copolymer, Mineral Oil, Trideceth-6	3.00
Orgasol 4000 EXD NAT COS Caresse	Nylon 6/12	2.00
SAFIC Care A CLFE	Aqua, Butylene glycol, Citrus Limon Fruit Extract	2.00
Chrono Chardy	Aqua, Butylene Glycol, Vitis Vinifera (Grape) Fruit Extract	2.00
Aquacell Framboise CBIO PrG	Rubus Idaeus Fruit Water, Benzyl Alcohol, Dehydroacetic Acid	5.00
Ponceau 4R 80% E124 (1% aqueous solution)	Aqua, CI 16255	0.04
Genowhite™	Acetyl Glycyl Beta- Alanine	0.50
NaOH (10% aqueous solution)	Aqua, Sodium Hydroxide	0.60
Demineralized Water	Aqua (Water)	2.00
Florasomes jojoba SMS 10% Vitamin E Apache Rose	Jojoba Esters, Tocopheryl Acetate, CI 73360, Talc	0.50

Moisturizing Cream

SNF - SK 006

Commercial name	INCI	Wt.%
Demineralized Water	Aqua (Water)	QSP 100
Glycerin	Glycerin	2.00
Glydant Plus® liquid	DMDM Hydantoin, Iodopropynyl Butylcarbamate	0.20
Natura Tec Ultrafeel™ AL	C12-15 Alkyl Lactate	3.00
Natura Tec Abysoft™	Crambe Abyssinica Seed Oil Phytosterol Esters	2.00
Myritol 318®	Caprylic/Capric Triglyceride	2.00
Sweet Almond Oil - Refined	Prunus Amygdalus Dulcis Oil	2.00
Tocobiol® C	Tocopherol (mixed), Beta-Sitosterol, Squalene	0.05
FLOCARE™ ET 76	Sodium Polyacrylate, Hydrogenated Polydecene, Trideceth-6	2.00



Arctic Blue Serum

SNF - SK 008



Commercial name	INCI	Wt.%
Demineralized Water	Aqua (Water)	QSP 100
Geogard® ECT	Benzyl Alcohol, Salicylic Acid, Glycerin, Sorbic Acid	0.80
Sodium Hydroxide (10% aqueous solution)	Aqua, Sodium Hydroxide	qs pH 6.5
Glycerin	Glycerin	3.00
NATURSOL™ EMI 132	Sodium Acrylate/Sodium Acryloyldimethyl Taurate Copolymer, C15-19 Alkane, Lauryl Glucoside	2.80
Cetiol® C5	Coco-Caprylate	5.00
Tocobiol® C	Tocopherol (mixed), Beta-Sitosterol, Squalene	0.05
Revivyl™	Propanediol, Orobanche Rapum Extract	0.30
Hydrintense™	Sea Water, Propanediol, Porphyridium Cruentum Extract	0.50
Food color Brilliant Blue FCF 85% (0.1% solution)	Aqua, CI 42090	0.05
Fresh Hydration	Parfum	0.11

Precious Gelée

SNF - SK 012w

Commercial name	INCI	Wt.%
Badoit	Aqua (Water)	QSP 100
VARI® HYAL LM	Sodium hyaluronate	0.05
FLOCARE™ SK 425	Ammonium Polyacryloyldimethyl Taurate	2.50
Butylene Glycol	Butylene Glycol	1.00
Ajidew® NL-50	Sodium PCA	2.00
Lincoserve™ WpH-LO	Pentylene Glycol, Propanediol, Caprylyl Glycol, Ethylhexylglycerin	0.80
Food color Brilliant blue FCF 85% (0.1% solution)	Aqua, C.I. 42090	0.07
Solubilisant LRI	PPG-26 Buteth-26, PEG-40 Hydrogenated Castor Oil, Water	0.40
Aqua Azur	Parfum	0.07
Hydrintense™	Sea Water, Propanediol, Porphyridium Cruentum Extract	1.20
Citric acid (50% solution)	Aqua, Citric acid	qs pH 5.5



Balancing Hemp Rejuvenation

Daily Moisturizer

SNF - SK 019



Commercial name	INCI	Wt.%
Demineralized Water	Aqua (Water)	QSP 100
Glycerin	Glycerin	2.00
FLOCARE™ SK 410	Ammonium Polyacryloyldimethyl Taurate	0.50
A-Leen® 5	Pentylene Glycol	1.00
Argan Oil	Argania Spinosa Kernel Oil	2.00
Neossance™	Squalane	2.00
Finsolv® TN	C12-15 Alkyl Benzoate	1.00
Lipex Shealiquid™ TR	Butyrospermum Parkii (Shea) Butter	1.00
Myritol® 318	Caprylic/Capric Triglyceride	5.00
Almond Oil	Prunus Amygdalus Dulcis (Sweet Almond) Oil	1.00
Linatural® NLP-O	Orange/Lemon Grass/Sesame Oil	1.00
Hemp Oil	Cannabis Sativa Seed Oil	0.50
NATURSOL™ EMI 132	Sodium Acrylate/Sodium Acryloyldimethyl Taurate Copolymer, C15-19 Alkane, Lauryl Glucoside	2.00
Rejuvenate®	Salvia Hispanica Seed Extract	0.25

Cold Process Mineral SPF 50 +

SNF - SK 020



Commercial name	INCI	Wt.%
Demineralized Water	Aqua (Water)	QSP 100
Edeta BD	Disodium EDTA	0.05
Glycerin	Glycerin	2.00
Keltrol® CG-SFT	Xanthan Gum	0.40
Eumulgin® SG	Sodium Stearoyl Glutamate	1.00
Zemea® Propanediol	Propanediol	5.00
Cetiol® CC	Dicaprylyl Carbonate	5.00
Myritol® 318	Caprylic/Capric Triglyceride	2.00
Phenoxyethanol	Phenoxyethanol	1.00
UV cut TiO2 60 VL	Titanium Dioxide, Coconut Alkanes, Polyhydroxystearic Acid, Stearic Acid, Alumina, Coco-Caprylate/Caprates	15.00
UV cut ZnO 72 NU	Zinc Oxide, Coconut Alkanes, Polyhydroxystearic Acid, Coco-Caprylate/Caprates, Dimethicone	25.00
Liposorb™ L-20	Polysorbate 20	1.00
Liposorb™ O	Sorbitan Oleate	0.50
Dispersun DSP-OL100	Polyhydroxystearic Acid	3.00
Gransurf 90	Cetyl PEG/PPG-10/1 Dimethicone	1.00
NATURSOL™ EMI 132	Sodium Acrylate/Sodium Acryloyldimethyl Taurate Copolymer, C15-19 Alkane, Lauryl Glucoside	4.00

Invisible Sunscreen Body

Lotion SPF 50

SNF - SK 021



Commercial name	INCI	Wt.%
Demineralized Water	Aqua (Water)	QSP 100
Edeta BD	Disodium EDTA	0.10
Glycerin	Glycerin	2.00
Keltrol® CG-SFT	Xanthan Gum	0.50
Eumulgin® SG	Sodium Stearoyl Glutamate	1.00
Cetiol® C5C	Coco-Caprylate/Caprates	5.00
Uvinul® MC 80	Ethylhexyl Methoxycinnamate	10.00
Uvinul® N 539T	Octocrylene	5.00
Neo Heliopan® HMS	Homosalate	10.00
Neo Heliopan® OS	Ethylhexyl Salicylate	5.00
Dispersun DSP-OL100	Polyhydroxystearic Acid	0.25
Liposorb L-20	Polysorbate 20	0.25
Lexgard O-LO	Caprylyl Glycol	0.50
Phenoxyethanol	Phenoxyethanol	1.00
Parsol® 1789	Butyl Methoxydibenzoylmethane	5.00
Zano® 10 Plus	Zinc Oxide, Triethoxycaprylylsilane	10.00
NATURSOL™ EMI 132	Sodium Acrylate/Sodium Acryloyldimethyl Taurate Copolymer, C15-19 Alkane, Lauryl Glucoside	1.25

Hand Sanitizer Gel

SNF - SK 014



Commercial name	INCI	Wt.%
Deionized Water	Aqua (Water)	QSP 100
Absolute Ethanol	Alcohol	70.00
FLOCARE™ SK 425	Ammonium Polyacryloyldimethyl Taurate	0.70
Glycerin	Glycerin	5.00





HAIR CARE



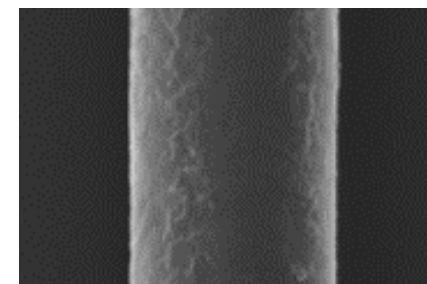
CONDITIONING AGENTS AND CATIONIC INVERSE EMULSIONS

The **FLOCARE™** range of products is available in liquid (solution) or dry form. Film formers (conditioners) coat hair or skin. When used in hair care, our conditioning polymers add a smooth coating to the surface of the hair. This protective coating provides easier combability and softness to the hair.

Untreated hair (700x)



Hair treated with FLOCARE™ C 107 LM PF (700x)



ACRYLATES COPOLYMERS AND CARBOMERS

Carbomers generate high viscosity at low concentration when an acrylate copolymer helps to develop crystal clear formulas in a foaming environment. In addition, these polymers give the possibility to suspend solid or liquid particles.

CONDITIONING AGENTS

Product	INCI Name	% Active	Optimal Dosage (%)	Applications and Uses
FLOCARE™ C 106 MV	Polyquaternium-6	39 - 41	0.75 - 3	Use in high pH or highly reactive formulations such as bleaches, hair color, or relaxers. This grade is self-preserved.
FLOCARE™ C 107 LM PF	Polyquaternium-7	8.8 - 9.8	1 - 5	Richness of foam, improvement of softness, and combability without build-up. Easy to use compared to PQ-6. Used in shampoos and styling formulations.
FLOCARE™ C 122 PF	Polyquaternium-22	39 - 43	1 - 3	Delivers conditioning in extreme pH. Mainly used in hair color, hair dyes, and hair bleach.
FLOCARE™ C 139 PF	Polyquaternium-39	10.2 - 11.5	2.5 - 3	Allows rich and thick foam with improved stability. Used in shampoos for damaged hair with good wet and dry combing properties.
NEW NATURSOL™ G 101	Guar Hydroxypropyltrimonium Chloride	100	0.2 - 1	Prolonged conditioning effect. Allows deposition of silicone or other oils. Greater foam stabilization in the presence of sebum.
NEW NATURSOL™ G 112	Guar Hydroxypropyltrimonium Chloride	100	0.2 - 1	Purified guar derivative providing high conditioning benefits. Particularly recommended in transparent shampoos, body wash, bath and shower lotions.
NEW NATURSOL™ G 202	Hydroxypropyl Guar Hydroxypropyltrimonium Chloride	100	0.2 - 1	Enables creation of clear formulations. Designed for moderate conditioning to hair, improving wet and dry combability. Brings excellent foam density.

STYLING AIDS

FLOCARE™ C 111 PF	Polyquaternium-11	19 - 21	2 - 5	Helps with moisturizing and aids in styling. Recommended for mousses and creams.
FLOCARE™ C 111 NO				
FLOCARE™ FX 100	Sodium Polyacrylate	24 - 26	0.5 - 2	Exhibits good stiffness and humidity resistant properties. Recommended for fixing resins.

RHEOLOGY MODIFIERS

Product	INCI Name	% Active	Optimal Dosage (%)	Applications and Uses
FLOGEL™ FG 900	Carbomer	> 92	5 - 10	Efficient thickening and stabilization. Soluble in water and alcohol. Provides high viscosity even at low concentrations (< 1%). Designed for hair sprays or hair styling gels.
FLOGEL™ FG 1000				
FLOCARE™ DE 15A	Acrylates Copolymer	30	5 - 7	Suspending, stabilizing, and thickening properties for highly concentrated surfactant, sulfated and non-sulfated formulations. Provides very high transparency. Enhances intensity of pearlescence.
FLOCARE™ ET 1237 PP1	Polyquaternium-37, Mineral Oil, PPG-1 Trideceth-6	48 - 52	3 - 8	Multifunctional additive to deliver high thickening, conditioning, and straightening properties. Allows formulators to optimize the ingredients used in a cationic system (conditioners).
FLOCARE™ ET 1737 GPG	Polyquaternium-37, Propylene Glycol Dicaprylate/Dicaprate, PPG-1 Trideceth-6	48 - 52	3 - 8	Multifunctional additive to deliver high thickening, conditioning, and straightening properties. Allows formulators to optimize the ingredients used in a cationic system (conditioners).
FLOCARE™ ES 502	Sodium Polyacrylate, Mineral Oil, Trideceth-6	50	6 - 11	Allows hair color formulations. Provides viscosity and a creamy texture.
FLOCARE™ PSD 1037 LV	Polyquaternium-37	> 85	3 - 8	Straightening properties allows conditioning without build-up especially for damaged fine hair. Recommended if high electrolyte stability is required.
FLOCARE™ PSD 1037 XT	Polyquaternium-37	> 85	3 - 8	Suitable for clear formulations, with high yield value. Multifunctional additive to deliver thickening, conditioning, and straightening properties.

Recommended dosage is: 2 to 4% for FLOCARE™ ET and FLOCARE™ ES range
 1 to 2% for FLOCARE™ PSD range
 7 to 9% for FLOCARE™ DE 15A

Sulfate-Free Shampoo

SNF - HC 001

INCI	Wt.%
Aqua (Water)	QSP 100
Sodium Cocoamphoacetate	17.00
Sodium Lauroyl Oat Amino Acids	12.00
Cocamidopropyl Betaine	9.00
Polyquaternium-7 (FLOCARE™ C 107 LM PF)	2.00
Parfum	0.30
Preservative	qs
Citric Acid (100%)	1.00

Hair Mask

SNF - HC 007

Commercial Name	INCI	Wt.%
Demineralized Water	Aqua (Water)	QSP 100
FLOCARE™ C 139 PF	Polyquaternium-39	1.00
Massocare IPP	Isopropyl Palmitate	3.00
Mikrokill® COS	Phenoxyethanol, Chlorphenesin, Caprylyl Glycol	0.80
FLOCARE™ ET 1737 GPG	Polyquaternium-37, Propylene Glycol Dicaprylate/Dicaprate, PPG-1 Trideceth-6	3.00

Hydra Calm Shampoo

SNF - HC 003

INCI	Wt.%
Aqua (Water)	QSP 100
Polyquaternium-22 (FLOCARE™ C 122 PF)	1.50
Octocrylene, Homosalate, Butyl Methoxydibenzoylmethane, Tocopherol	0.10
Sodium Laureth Sulfate	27.00
Sodium Cocoamphoacetate	8.00
Sodium Benzoate	0.50
Saccharide Isomerate, Aqua, Sodium Citrate	0.20
Citric Acid	As required
CI 42090	0.20
Sodium Chloride	2.00
Parfum	0.20



Semi Permanent Hair Color

SNF - HC 004

Commercial Name	INCI	Wt. %
Demineralized Water	Aqua (Water)	QSP 100
Glycerin	Glycerin	2.00
Unicert Red K7057J	Acid Red 33	0.20
Unicert Blue 05601J	Acid Blue 9	0.05
Jarocol Red 3	HC Red 3	0.05
Transcutol® CG	Ethoxydiglycol	5.00
FLOCARE™ ES 502	Sodium Polyacrylate, Mineral Oil, Trideceth-6	1.50
Argan Oil Refined	Argania Spinosa Kernel Oil	2.00
Cetiol® C5	Coco-Caprylate	2.00
Microcare® PHG	Phenoxyethanol/Caprylyl Glycol	0.50
Sodium Hydroxide (50% aqueous solution)	Aqua, Sodium Hydroxide	qs pH 6

Transforming Retouch

SNF - HC 005

Commercial Name	INCI	Wt. %
Soft Talc	Talc	QSP 100
Magnesium Stearate	Magnesium Stearate	3.50
FLOCARE™ PSD 1037 LV	Polyquaternium-37	10.00
ACT96-TRI-77891	CI 77891, Disodium Stearoyl Glutamate, Aluminum Dimyristate, Triethoxycaprylylsilane	4.00
ACT96-TRI-77492	CI 77492, Disodium Stearoyl Glutamate, Aluminum Dimyristate, Triethoxycaprylylsilane	3.90
ACT96-TRI-77491	CI 77491, Disodium Stearoyl Glutamate, Aluminum Dimyristate, Triethoxycaprylylsilane	6.90
ACT96-TRI-77499	CI 77499, Disodium Stearoyl Glutamate, Aluminum Dimyristate, Triethoxycaprylylsilane	15.20
Cocoate™ BG MB	Butylene Glycol Cocoate	2.80
TroyCare™ PE73	Phenoxyethanol, Ethylhexylglycerin	0.50





BATH & SHOWER



CONDITIONING AGENTS

Product	INCI Name	% Active	Optimal Dosage (%)	Applications and Uses
FLOCARE™ C 107 LM PF	Polyquaternium-7	8.8 - 9.8	1 - 5	Provides rich and creamy foam to bath and shower products with conditioning properties and soft after-feel to the skin.
FLOCARE™ C 122 PF	Polyquaternium-22	39 - 43	1 - 3	Creates stable, rich, and dense foam to bath and shower products. Provides conditioning properties and soft after-feel to the skin.
FLOCARE™ C 139 PF	Polyquaternium-39	10.2 - 11.5	2.5 - 3	Creates stable, rich, and dense foam to bath and shower products. Provides conditioning properties and soft after-feel to the skin.

RHEOLOGY MODIFIERS

Product	INCI Name	% Active	Optimal pH Range	Applications and Uses
FLOGEL™ FG 900	Carbomer	> 92	4 - 10	Efficient thickening and stabilization. Soluble in water and alcohol. Provides high viscosity even at concentrations < 1%. Designed for sanitized hand soaps and scrub formulations.
FLOGEL™ FG 1000				
FLOCARE™ SK 425	Ammonium Polyacryloyldimethyl Taurate	> 92	4 - 8	Clear formulations and exceptional sensory feel. Extreme resistance to electrolytes. Ideal for formulation with active ingredients.
FLOCARE™ DE 15A	Acrylates Copolymer	30	5 - 7	Allows clear shampoo formulations, thickens surfactant bases, and enhances pearlescence and suspension properties.

NEW

NEW



2-in-1 Refreshing Shower Gel

SNF - SG 002

INCI	Wt. %
Aqua (Water)	QSP 100
Glycerin	0.50
Sodium Laureth Sulfate	45.00
Disodium Lauroamphoacetate	8.00
Cocamidopropyl Hydroxysultaine	5.00
Decyl Glucoside	2.50
Potassium Laureth-1 Phosphate	3.50
Citric Acid	As required
Polyquaternium-7 (FLOCARE™ C 107 LM PF)	1.00
Polysorbate 20	0.30
DMDM Hydantoin	0.40
FD&C Blue (0.12% solution)	As required
Perfume	0.10

Bright Boosting Facial Cleanser

SNF - SG 004

Commercial Name	INCI	Wt. %
Deionized Water	Aqua (Water)	QSP 100
AHA acides de fruits	Aqua, Vaccinium Myrtillus Fruit Extract, Saccharum Officinarum Extract, Citrus Aurantium Dulcis Fruit Extract, Citrus Limon Fruit Extract, Acer Saccharum Extract	2.00
FLOCARE™ SK 425	Ammonium Polyacryloyldimethyl Taurate	2.00
Food color Ponceau 4R 80% (0.10% solution)	Aqua, CI 16255	0.15
Amphotensid B4/CONC-I	Cocamidopropyl Betaine	8.90
Miranol® Ultra C32	Sodium Cocoamphoacetate	3.15
Glycerin	Glycerin	3.00
Lincoserve™ WpH-LO	Pentylene Glycol, Propanediol, Caprylyl Glycol, Ethylhexylglycerin	0.80
Solubilisant® LRI	PPG-26 Buteth-26, PEG-40 Hydrogenated Castor Oil, Water	1.00
Pamplémousse rose	Parfum	0.50
Sodium Hydroxide (10% solution)	Aqua, Sodium Hydroxide	qs pH 4.5

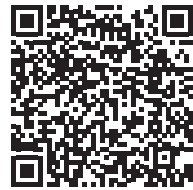
Facial Scrub

SNF - SG 005

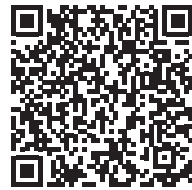
Commercial Name	INCI	Wt. %
Deionized Water	Aqua (Water)	QSP 100
FLOCARE™ SK 425	Ammonium Polyacryloyldimethyl Taurate	2.00
Protelan™ LS 9011/SL	Sodium Lauroyl Sarcosinate	6.50
Amphotensid B4/CONC-I	Cocamidopropyl Betaine	6.50
Glycerin	Glycerin	3.00
Euxyl® PE 9010	Phenoxyethanol, Ethylhexylglycerin	0.80
Apricot exfoliator 1000	Prunus armeniaca (apricot) seed powder	0.30
Solubilisant® LRI	PPG-26 Buteth-26, PEG-40 Hydrogenated Castor Oil, Water	0.30
Crème d'abricot	Parfum	0.13



VIDEOS



FLOCARE™ SK 425



FLOCARE™ SK 410



NATURSOL™ EMI 132



NOTES

NOTES

www.snfpersonalcare.com

© 2021 SNF. All Rights Reserved.

While SNF makes reasonable efforts to ensure the information is accurate and up-to-date, SNF makes no warranties or representations, express or implied, as to the accuracy, completeness, or any other aspect of the information on this document and assumes no liability in connection with any use of this information. Nothing herein shall be construed as a recommendation or license to use any information found that conflicts with any patent, trademark, or copyright of SNF or others, and SNF makes no representations or warranties, express or implied that any use of this information will not infringe any such patent, trademark, or copyright.



flocare@snf.com

www.personalcare.snf.com

SNF s.a.
ZAC de Milieux
rue Adrienne Bolland
42163 Andrézieux Cedex
FRANCE

SNF Holding Company
PO Box 250
1 Chemical Plant Road
Riceboro, Georgia 31323
UNITED STATES

SNF DO BRASIL Ltda.
Estrada Bonsucesso
Itaquaquecetuba, 80
V Maria de Lourdes
Guarulhos SP 07251-280
BRASIL

SNF China Specialty
Chemicals Division Co.Ltd.
Room 603, Building 4
Greenland Qihangguoji,
Yuxi Road
Houshayu, Shunyi District
Beijing, 101300
CHINA



Supplied by

